

# Sarathi

Management Software for Schools



# 20+

## apps & features



Batches



Courses



Students



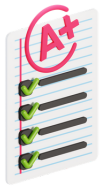
Teachers



Assignments



Announcements



Assessments



Syllabus



Attendance



WhatsApp Share



Settings



Forums



Events



Finances



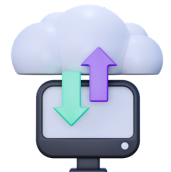
Reporting



Excel Compatible



Birthdays



Cloud Storage



Calendar



News Board



Practice Tests



Attachments



Timetables



Semesters



## ...and many more coming soon!

*We update our software weekly!*

Each new update comes with new and improved features. And you get all our software updates for free, at no additional cost, for life.

# Frequently Asked Questions

## **Q. How long does it take to set up?**

Setup only takes a couple of hours. We, however also offer to format and upload the first batch of your data to our system and this can take upto a week depending on how much formatting is required.

## **Q. Can we customise the software according to our school?**

Absolutely, we offer fully customisable branding; the logos, colours, and even some frequently used terms like assignment or course, are all changable

## **Q. Is student data sold or shared?**

Never. Your data is safe, private and never sold or shared.

## **Q: Who can access our information, and when?**

Only authorised personnel from our support team are given access to the data, this is done so that they can provide support when needed. Some private data, like passwords, are encrypted before they reach us, so even we cannot access them.

## **Q: What about tutoring? Or Support?**

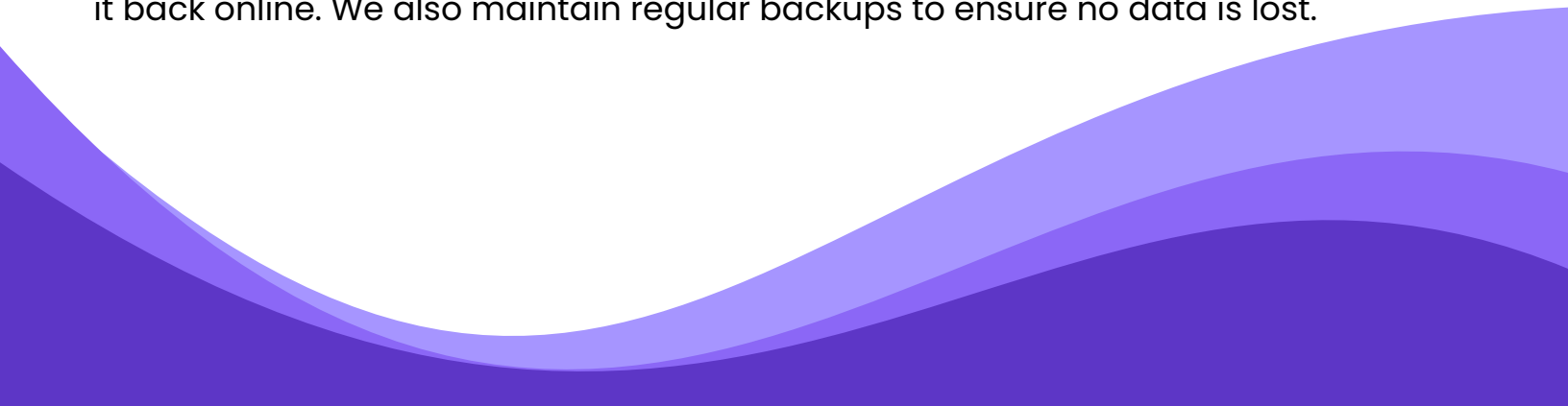
We have ensured the software's UI is intuitive and simple to use. Even so, we will tutor the teachers, and staff once during setup. Admins are added to a whatsapp group alongside a member of our staff, so that queries can be resolved as soon as possible.

## **Q: What if we want a feature that is not currently there?**

We are constantly working on improving the software. Updates and new features are rolled out automatically at no extra cost. We value feedback from our partner schools and often develop new features based on user requests and suggestions. So if you want a new feature, just ask. Our team will be sure to add it in the next update.

## **Q. What happens if the system goes down? Will we lose our data?**

Our systems have a 99.9% uptime guarantee. In the rare event of a system-wide outage, we have a dedicated technical team that works around the clock to bring it back online. We also maintain regular backups to ensure no data is lost.

Decorative purple wavy lines at the bottom of the page.



# Connecting Classrooms ...and Community



## **Intuitive & User-Friendly:**

Simple to use for Students, Parents, and Staff.



## **Personalised School Branding:**

Everything can be customised to match your school.



## **Access Anywhere, Anytime:**

Designed to work smoothly on Laptops, Tablets, and Phones.



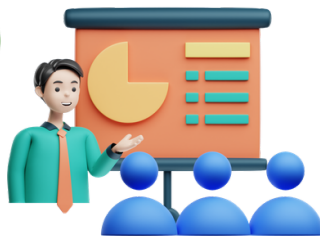
## **Military grade security:**

No one can see your passwords, not even us!



## **Dedicated and Reliable Support:**

Available during office hours to ensure smooth operation.



## **Seamless Transition Guaranteed:**

Setup, training, and the initial data upload are on us.



## **Easy Reporting and Analytics:**

Generate reports on attendance, grades, and admissions.



## **Daily Database Backups**

You will never lose your data, even if the system goes down.

## CONTACT US



**+91 90043 45953**

**+91 73699 02070**



**support@lariv.in**

**sales@lariv.in**